

PCI Bus Expansion Chassis Short x 13Slots
with built-in power supply

ECH-PCI-CE-H13A



* Specifications, color and design of the products are subject to change without notice.

Features

PCI (5V/32bit 33MHz) bus slots can be added to your PC.

PCI (5V/32bit 33MHz) bus 13slots can be added to your PC. This expansion chassis is connected to a PC using an optional expansion adaptor.

Short-type PCI bus boards can be connected.

You can connect 13 short-type [176.5 (L) x 107 (H) mm] PCI bus boards.

ON/OFF control of the chassis can be linked to that of your PC.

You can link the ON/OFF control of the expansion chassis to that of your PC.

Steel chassis with cooling fan

Steel chassis with cooling fan suitable for use in fields

Rack-mountable

Rack-mountable with supplied brackets

Specification

Specification

Item	Specification
Compatible bus	PCI Local Bus Specification Rev2.3 (+5V type)
Address space	32-bit memory address, I/O address
Interrupt level	INTA - INTD
Bus operating clock	33MHz (Max.)
Number of user-available slots	13 slots (short size)
Acceptable board sizes (mm)	176.5(L) x 107(H)
Power supply	
Expansion slot supplied power (The output current must not exceed the value on the right.)	+5VDC 18A (Max.) *2 +3.3VDC 15A (Max.) *2 +12VDC 9A (Max.) -12VDC 0.8A (Max.)
Maximum total power capacity	0 - 30 °C : 230W 30 - 40 °C : 205W 40 - 50 °C : 175W *3
AC input line voltage *1	115/230VAC (selecting switch)
AC line frequency	50 - 60Hz
AC power input current	6A(115VAC)/4A(230VAC)
Physical dimensions (mm)	424.0(W) x 255.0(L) x 156.0(H) (No protrusions)
Weight	7.5 kg
AC cable	2.5m 3P

*1 AC input line voltage range : 90 - 132VAC/180 - 250VAC

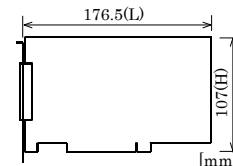
*2 The sum of +5VDC and +3.3VDC must not exceed 90W.

*3 Condition with CE marking: 175W at 50°C.

This product is an expansion chassis that adds PCI bus slots of PC.

Connecting an optional expansion adaptor (EAD-CE-LPE, EAD-CE-EC) can add PCI bus slots to the PC. Mountable board is short-type PCI bus board (176.5(L) x 107(H) mm). You can link the ON/OFF control of the chassis to that of your PC.

Outside dimensions of acceptable board (Max.)



Environmental specification

Item	Specification
Operating temperature	0 - 50°C
Operating humidity	20 - 80%RH(No condensation)
Storage temperature	0 - 60°C
Storage humidity	10 - 90%RH(No condensation)
Floating dust particles	Not to be excessive
Corrosive gases	None

CAUTION

The power supply and cooling fan in this product are consumables, requiring replacement after use for a certain period of time. Although each of the parts should be replaced after use for the following period of time in principle, the life may be shortened depending on the operating environment. Keep in mind that the lives of the parts may be extremely shortened if they are used where it is either exposed to must dirt, metal chips or particles, or dust or affected by oil or corrosive gas.

Power supply :

About 5 years (in an office environment kept at a temperature of 25°C and a humidity of 60%)

Fan :

About 5 years (in an office environment kept at a temperature of 25°C and a humidity of 60%)

Fan Filter :

About 1 year (in an office environment kept at a temperature of 25°C and a humidity of 60%)

Combinations of Expansion Adapters and Expansion Chassis

The expansion adapters and expansion chassis can be used in the following combinations:

Expansion adapter	Expansion chassis ECH-PCI-CE						
	-H2B	-F2B	-H4B	-F4B	-H4A	-H7A	-H13A
EAD-CE-EC	○	○	○	○	○	x	x
EAD-CE-LPE	○	○	○	○	○	○	○

Expansion adapter (Option)

Expansion Adapter for PCI Express Slot : EAD-CE-LPE

Check the CONTEC's Web site for more information on these expansion adapters.

Packing List

Expansion chassis [ECH-PCI-CE-H13A] ...1
 Power cable ...1
 Slot cover ...13
 Board fixed screw ...13
 Rubber feet ...4
 User's Manual ...1
 Bracket fixed screw for rack-mounted ...4
 Bracket for rack-mounted ...2

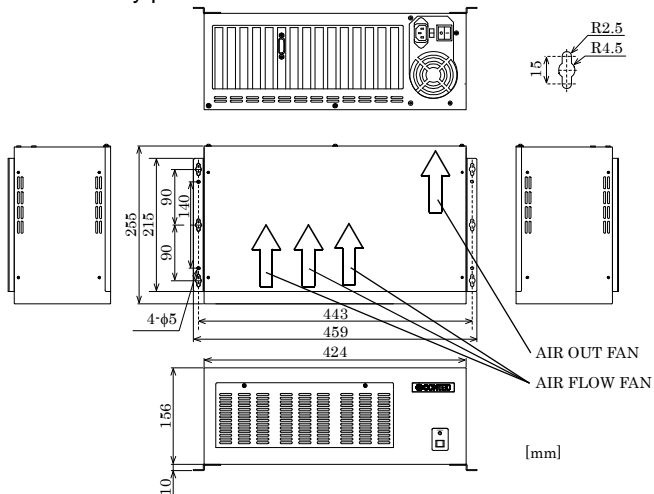
Physical Dimensions

⚠ CAUTION

When using this chassis, keep it at least 20mm away from any object such as the wall for cooling purposes.

Attaching rubber feet to the chassis makes it 3.6mm taller.

< Horizontally placed >



< Vertically placed >



Restrictions

This product is used in a combination with the optional expansion adapter. The following restrictions apply to the situation when the expansion adapter is connected to the expansion chassis.

This product has restrictions on the types of PCs and boards that can be used.

Be sure to check the following restrictions before use.

< Restrictions of PC >

This product use the PCI-to-PCI Bridge to extend the bus. The PCI boards plugged in PCI slots in this product are recognized if the PCI-to-PCI bridge is recognized by the BIOS in the PC used. Ask the PC vendor for whether the BIOS recognizes the PCI-to-PCI bridge.

< Restrictions on transfer rate >

When the expansion chassis accommodates a board that performs high-speed transfer such as bus mastering, the overall transfer rate may be lower than that of PCI bus slots in the main unit of a desktop PC.

This is caused by bus extension by the PCI-to-PCI Bridge. The transfer rate may vary with the system configuration and the type of the PC.

< Restrictions of PCI board >

None of the following boards can be plugged into any expansion slot in this product.

Video display board (VGA board)

Board to connect a PCI bus expansion chassis

Board explicitly stated not to be used with the PCI-to-PCI Bridge

Some boards, even PCI bus-compliant ones, may not work depending on their specifications